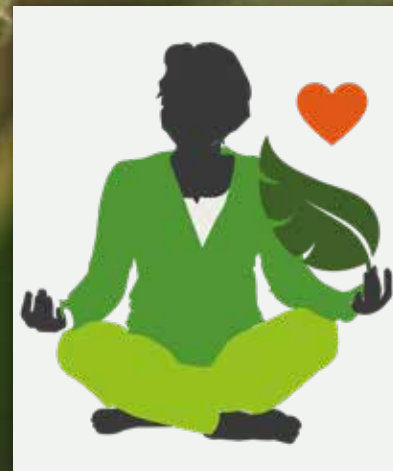


Spring into action
and green up
your workplace

Give your workers and visitors a
biophilic boost to their wellbeing.



For a greener world



Contents

Walls brought to life at Capgemini	3
A restaurant rooted in biophilia	4/5
Bringing life to empty office space	6
Green space for Pin Yard residents	7
Sheffield's growth mindset	8



Back to nature

As Spring gets underway, our exterior teams are gearing up for another busy season. One key element of our landscape service is biodiversity, a value at the core of our partnership with Westfield London when we created the Nature Reserve in 2020.

The Nature Reserve is an accessible and biodiverse space at Westfield London, Europe's largest shopping centre. Wildflowers, herbs, fruit and vegetables thrive here, while insect hotels, a beehive and a pond encourage wildlife.

We are now preparing the space for Spring, as Urban Planters London and Westfield volunteers get ready to re-start the weekly sessions with local schools and to welcome visiting members of the public.

As a new season of activity begins in the nature reserve, we look forward to reconnecting people with the natural environment and nurturing a slice of biodiversity in the heart of the city.

Duncan Newman



Walls brought to life at Capgemini

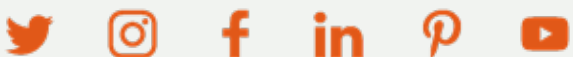
Green walls continue to grow in popularity with our clients, thanks to their versatility, space-saving and low-maintenance design and, last but not least, their visual impact.

Urban Planters Midlands' latest scheme for the Telford offices of global IT provider and consultancy Capgemini showcases the transformative effect of living walls in an office setting.

A row of green room dividers in the canteen break up an open space, while creating visual interest, softening acoustics and providing health benefits such as cleaner air and a restorative view of nature.

By the elevator on the ground floor, a densely planted living wall enlivens a bare space and brings a biophilic lift to the area.

Urban's Francis Hunt selected a planting mix of Monstera, Aglaonema, Asplenium, Philodendron and Chlorophytum, all of which are hydroculture plants. This means no compost is required, and specimens can be quickly replaced without mess if needed. With around 480 plants used in the scheme, the walls will also help to improve the indoor air quality and humidity levels in the building.



A restaurant rooted in biophilia

Treehouse was a new bar and restaurant in the heart of the historic village of Haworth in need of a planting scheme to bring its concept to life.

Working with Francesco Pillitteri from JS Design and owner Frank Stott, Urban's Joe Potts devised a scheme which created a forest feel around the space.

The scheme's centrepiece is a replica tree that we built with the help of a joiner and French polisher, attaching lifelike replica foliage to complete the canopy shape.

Behind the bar, a preserved moss wall creates a natural and textured feel. On feature walls, greenery seems to come through the wooden slats, and ivy appears to creep up and across the room, all of which works alongside the array of biophilic elements introduced by the designer to immerse diners and drinkers in nature.





Bringing life to empty office space

Urban Planters North West installed a fresh office planting scheme for Ashdown Phillips, a managing agent based at 35 Dale Street, in Manchester's vibrant North Quarter.

An existing Christmas client of ours, they remarked how bare the space suddenly looked when our team came to remove their Christmas tree. So, we suggested introducing planting to bring life to empty areas around the office.

They had seen the displays we had added into other recently refurbished floors within the building, so we talked through a range of internal planting options with them.

The office featured some large windows, which created an open, bare feel to the room. So, we introduced planting along the panes to soften the look and feel of the space. The rows of uniform, polystone troughs feature just one type of plant for impact: the structural and unusual *Rhipsalis baccifera* (Mistletoe Cactus), which originates from Central and South America, the Caribbean and Florida.

We also added two large-leaved *Monstera deliciosa* (Swiss cheese plant), which originate from the tropical forests of southern Mexico down to Panama, planted in natural looking polystone containers and positioned in the seating area.

The client and staff working within the building are really pleased with how much the displays have changed to look and feel of the space.



Green space for Pin Yard residents

Following a successful planting project at their striking new development at The Headline, Grainger tasked Urban Planters' National and Leeds teams to help with designing indoor plant displays for Pin Yard, its latest rental development on Leeds's Sweet Street.

The objective of the planting was to help bring life to the building's amenity area, where residents can enjoy a range of facilities, including lounge, gym and co-working space.

At Pin Yard, Grainger was keen to use live planting, prioritising specimens with strong air-purifying properties, helping to create healthy spaces where residents can gather.

One of the key design features of the amenity space is the use of bespoke cabinet tops and room dividers, designed by Weare74, which include integrated planting troughs.

Using a mix of live planting, including various Philodendrons, Ficus microcarpa and Schefflera arboricola, we created striking biophilic features which brought visual interest without compromising floor space.

In larger spaces, we installed a range of large floor-standing clusters of Dracaena and Epipremnum, in Baq's Ecoline Phoenix planters. The planters are made using plastic recycled from a wide range of products, including old car bumpers, phones, keyboards, computers and vacuum cleaners.

The outcome is vibrant, green space for residents to enjoy.



Sheffield's growth mindset

When we think about the biophilic effect of indoor plants, it is often in terms of wellbeing, such as lowering stress.

However, views of nature have also been proven to boost learning and creative thinking in a range of studies.

Little wonder then, that planting is fast becoming an essential element in learning spaces.

Sheffield Hallam's revamped City Campus atrium is testament to the way universities are embracing planting as part of creating welcoming and nurturing learning environments.

Two years in the planning, Urban Planters South Yorkshire worked alongside architects BDP and BAM Construction to design a sweeping planting scheme for the university's vast atrium and the cafeteria.

Linear and curved troughs line the sides of the atrium across all the floors, working with the wooden panels and natural light from the glass ceiling to create a biophilic learning environment.

