

**Fresh news &
ideas from
Urban Planters**

Fresh plant de'livery'
In our new look vans



**The Urban Planters
Guide to a greener world**

SUMMER 2023

Urban Update

ISSUE 47

For a greener world



Contents

Fresh de-‘livery’: a new look for our vans	3
Bringing life to a former casino site	4/5
Green walls for a new urban quarter in Leeds	6/7
Planting for the new Wave	8/9
Unseasonably good planning	10/11
Giving back to the community	12

Fresh de- ‘livery’: a new look for our vans

We are proud to have a strong and trusted brand at Urban Planters.

So, when we design new livery for the vans that deliver our services across the UK, we want it to reflect the level of quality we aim to provide.

Our new van livery has been designed to showcase the cornerstone of our business – plants! We hope you like our new look.



Forging a stronger sales team

We are lucky at Urban Planters to have a driven and enthusiastic sales team who have been critical to the growth of the business, thanks to their passion for promoting plants.

Because Urban Planters covers the length and breadth of the UK, it is important to ensure we stay connected, working closely to build the brand and grow as a team.

That's why, in my new role as Sales Director, I will be focussing on bringing the sales team together, sharing best practice to inspire and inform each other and building even closer ties around the network.

I will be visiting the sales team and going to sites and client meetings to see their work and consider ways we can further improve our offering.

We're also looking at expanding our sales network, recruiting representatives in new areas to expand our coverage.

This approach will ensure our staff and clients are supported as we continue to grow from strength to strength.

Paul Rogers



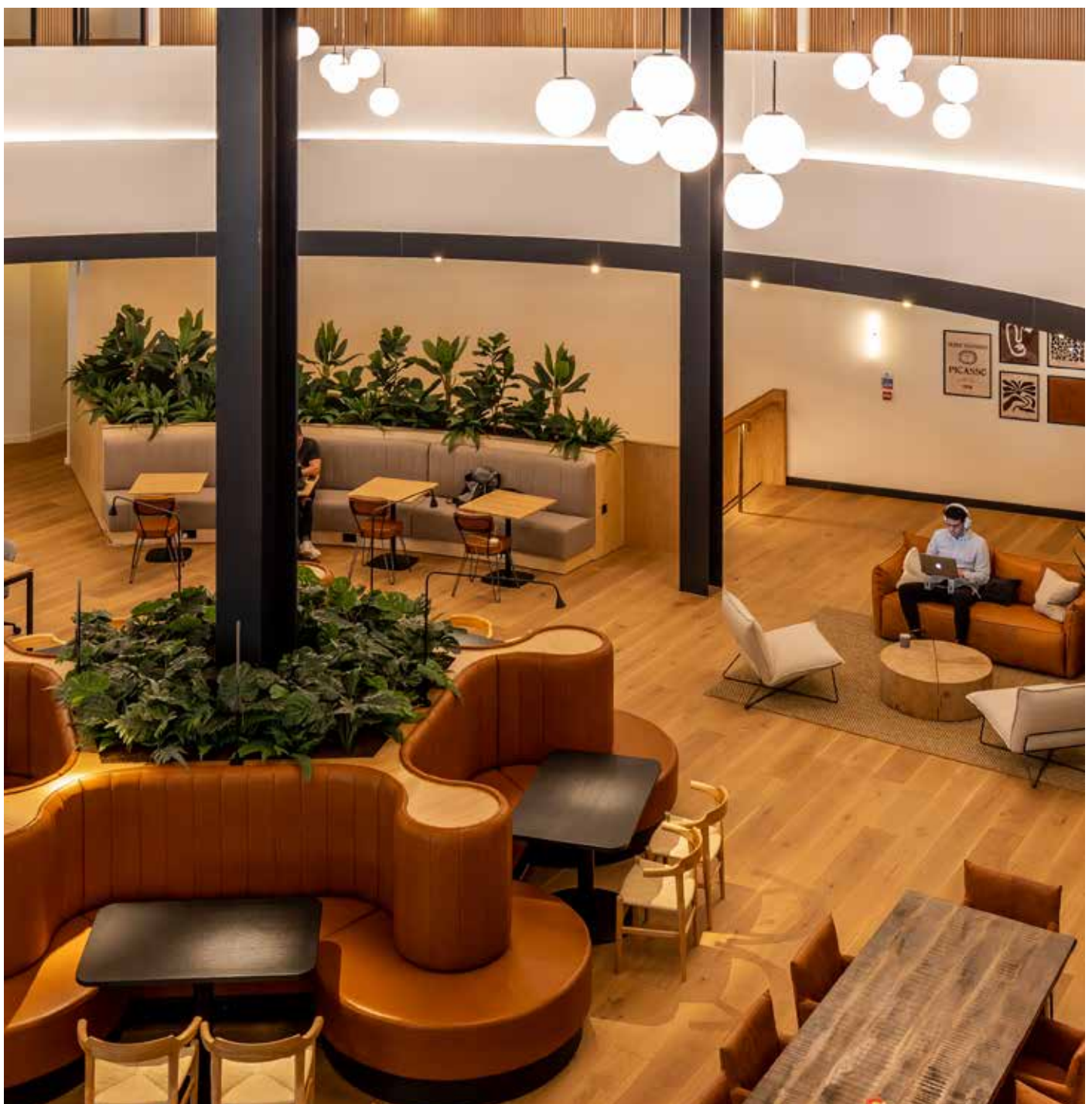
Bring life to a former casino site

In a recent project at Leeds Docks, Urban Planters Leeds successfully transformed a former casino site into a vibrant oasis, despite the site's limited access to natural light.

Working with Ed Snaith, Director of Operational Projects at Allied London, we designed an extensive planting scheme which added greenery and interest to this new work and social hub for creative industries in this busy waterside neighbourhood.

Given the lack of natural light in the area, we had to think carefully about how best to create an inviting and green environment. We opted for large mixed beds integrated into the furniture and teamed them with a wide range of free-standing displays to add depth and texture to the surroundings.

In lighter areas, we were also able to install a few live troughs and free-standing displays to help improve indoor air quality.





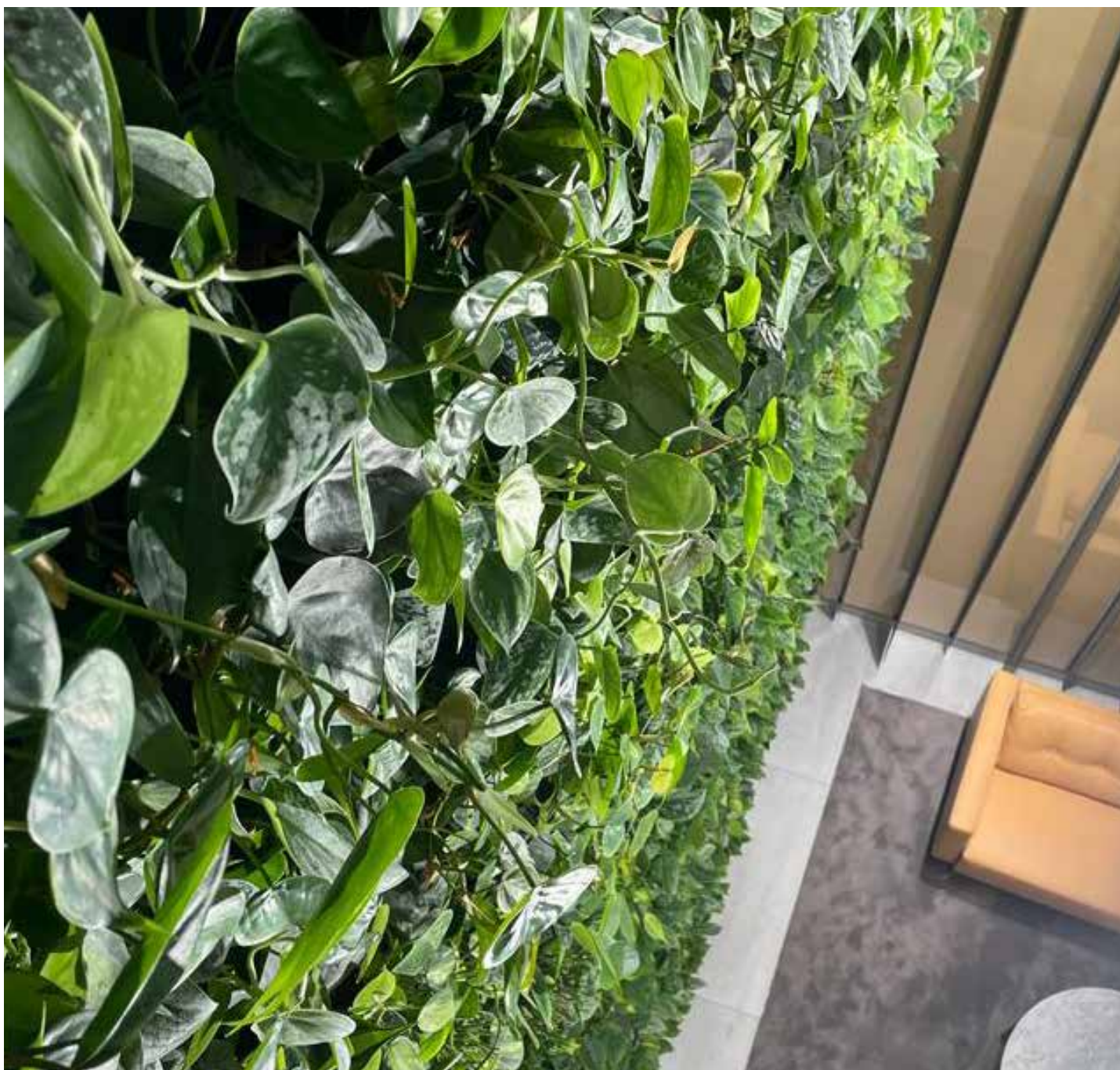
Green walls for a new urban quarter in Leeds

Green walls are an effective solution for workspaces in need of a biophilic touch but don't have floorspace to spare for free-standing plant displays. These walls also bring instant visual impact, making them especially effective in entrances and atriums.

When a new, high-specification office and leisure project was planned for Wellington Place in Central Leeds, Urban Planters Leeds worked with Wates Construction to design and install four large living walls, 4-by-8-metres each, to create a welcoming and vibrant social space in the heart of the complex.

Each wall is plumbed into the water mains and drainage, and a control box feeds and monitors watering as required, using sensors in the wall.

We were involved in the early stages of construction, working around contractors and consulting with the on-site electricians to ensure the walls were lit for optimum plant growth.







Planting for the new Wave

'The Wave' is a brand new building for the University of Sheffield's Faculty of Social Sciences. The building has been designed by HLM architects with sustainability at its core and it is the University's most sustainable building ever. It provides state-of-the-art teaching and learning spaces, social spaces and brings together interdisciplinary research centres within Social Sciences.

Boasting a vast foyer with bright natural and a range of natural materials used for the décor, it was a perfect blank canvas for a planting scheme.

We selected two 5.5-metre Bucida trees for the foyer space, accompanied by a range of mostly large-leafed planting, such as Alocasia cucullata and Strelitzia nicolai. We positioned free-standing planting throughout the building in anthracite or wood-effect containers to echo the striking design features.

Research has shown that plants can improve concentration, creative thinking and productivity, so it's no surprise that planting is increasingly popular in learning environments.



Unseasonably good planning

Festive planning starts early in our industry and, by July, we have already started taking orders for workplace decorations.

Decorating your workplace for Christmas is an exciting prospect on paper, but in reality it can be time-consuming and overwhelming at a busy time of year.

We have developed a stress-free Christmas decoration service, bringing festive cheer to your workplace without any effort on your part.

Here are some reasons why it's a worthwhile investment to use a professional Christmas decorating service:

- **Expertise and creativity:** We use colour schemes effectively, and position decorations to maximize impact.
- **High-quality decorations:** We have access to a wide range of high-quality decorations that are not readily available to the general public.
- **Flexible installation and collection dates:** to meet your requirements and with minimal disruption.
- **Consistency and theme development:** We can develop a cohesive theme that aligns with your tastes or company's brand and values.
- **Flexibility to choose new decoration themes each year** if agreed.
- **Safety and compliance:** We are well-versed in safety regulations and will ensure that all decorations are installed correctly, minimizing any potential risks.
- **Time and efficiency:** We handle everything from planning and design to installation and clearing away in January, allowing your staff to focus on their core responsibilities.
- **Off-site recycling of all live trees.**

It may feel unnatural to book Christmas decorating so early, but when the festive madness begins and your workplace is looking effortlessly sparkling, you'll be glad you got ahead.





Giving back to the community

Earlier this month, we helped Knight Frank to bring a dull roof area to life as part of their work with The Baker Street Quarter Partnership.

The partnership is a not-for-profit organisation which aims to enhance and manage the Baker Street and Marylebone area with the aim of creating an area that is compelling, inclusive, progressive and exceptional, with sustainability at its heart.

As part of this work, we supplied planting, pots and install support to create a roof garden for the Feathers Association on their Marylebone Youth and Community Club roof terrace.

Along with volunteers from Knight Frank, we installed free standing plant pots, a herb wall, vegetable troughs and some jasmine climbers to bring a new life to previously grey and nondescript roof area.

